



AMERICA'S CUP CLASS

CONFIDENTIAL INTERPRETATION No 1

December 10, 2004

Page 1 of 2

In response to the following:

Please clarify the following questions in relation to Rule 25.5 and the accompanying sketches.

With reference to rule 25.5, the accompanying sketch shows a bolt rope track, which is not part of the mast single surface, and is designed to comply with all aspects of rule 24.1

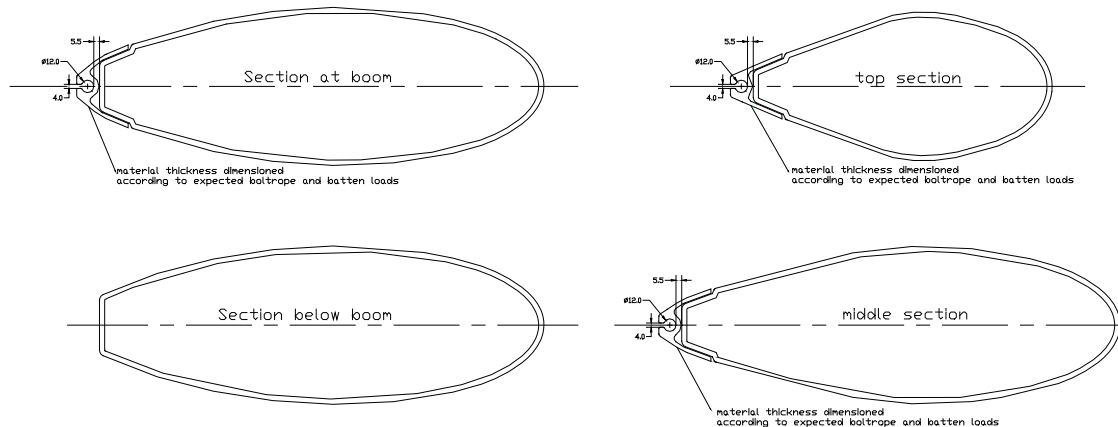
It complies with Rule 25.5 A – the bolt rope size and recess is normal for an AC boat ~ 8mm bolt rope

It complies with Rule 25.5 B – the bolt rope recess is less than 6mm from the aft face of the mast.

It is our understanding that, due to the points above, the bolt rope track does not form part of the measurement of the rig, as per Rule 25.4

Please confirm that the bolt rope track, as drawn, will be measured in the manner we have interpreted it to be and the fitting itself is acceptable.

INTERPRETATION



The bolt rope track shown and dimensioned in the sketches is not part of the single surface mast tube and as such shall not be measured in the fore and aft dimension of the mast. Rule 24.1 shall apply to the construction of the track. This interpretation is based solely on the information and sketches provided. Any variation from the dimensions and shape shown in the supplied sketches may require further interpretation. END

This interpretation is made by the Measurement Committee in accordance with Rule 3.2 of Version 5.0 of the America's Cup Class Rule.

*Ken McAlpine
ACC Technical Director
117 Marine Terrace, Fremantle,
W.A. 6160 AUSTRALIA
Phone 61 8 9336 6664
Fax 61 8 9336 6665
Email kenmcalpine@compuserve.com*