



# AMERICA'S CUP CLASS

## PUBLIC INTERPRETATION No 2

November 26, 2004

Page 1 of 2

In response to the following:

Please clarify the following questions in relation to Rule 18.3(a).

1. The diagrams below show a number of possible recesses for spinnaker poles, set into a cambered deck. Is the depth of a trough measured from the higher side, from the mean of the adjacent deck in a given section, or horizontally from the sheerline (indicated in 18.1) at the section in question?
2. Is the depth of any drainage area taken separately?
3. For the width of the trough, does the width include fillets? If so, at what point is it measured?
4. Does the width also include or exclude any drainage to the side?

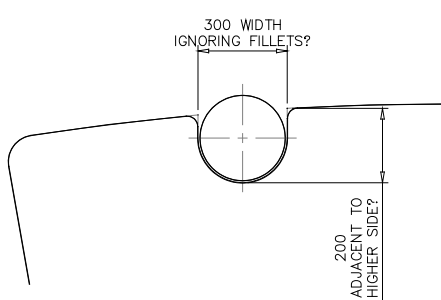


FIG. 1

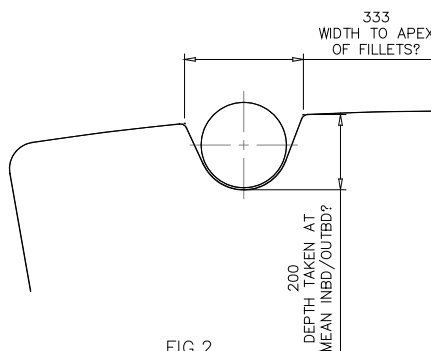


FIG. 2

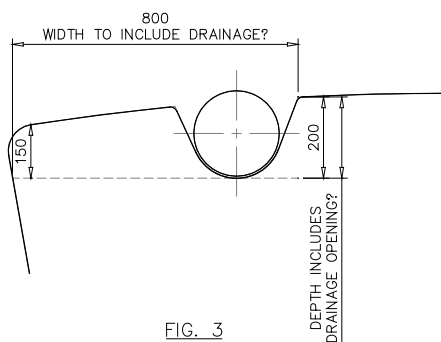


FIG. 3

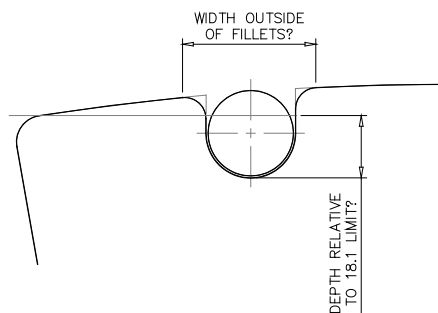
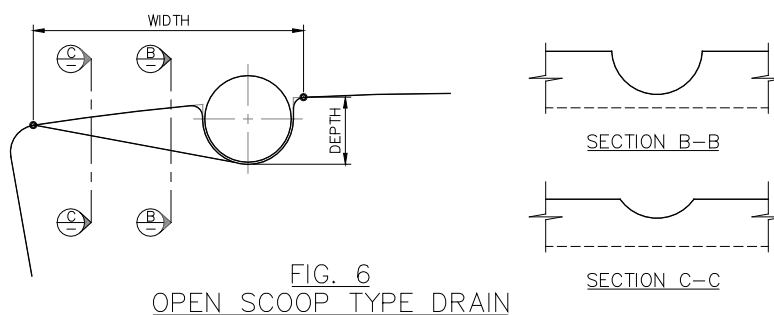
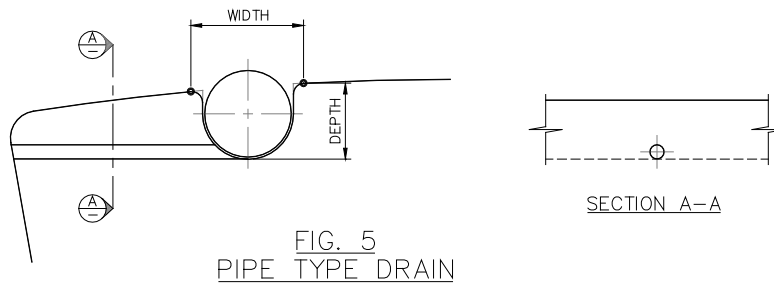


FIG. 4

### INTERPRETATION

1. The depth of the spinnaker pole trough shall be measured vertically at any transverse section from a point on the edge of the trough which will yield the maximum value. In the diagrams shown the depth would be measured from the "higher side". See Fig 5.

2. The drainage of the trough is not to be considered in the depth limitation in Rule 18.3. provided the drainage is pipe-like. If the drainage is open (like an open type scoop recess in the deck) the depth of the drain shall comply with the depth limitations in Rule 18.3.
3. The width of the spinnaker pole trough shall be taken as the width outside the fillet radii as shown in Fig 5 of the sketches below. This width shall be measured from the uppermost commencement of the fillet radius.
4. The width of spinnaker pole trough drainage shall not be included in the width limitation provided the drainage is pipe-like. If the drainage is open (like an open type scoop recess in the deck) the width of the drain and trough combined shall comply with the width limitations in Rule 18.3. See Fig 6 below.



END

*This interpretation is made by the Measurement Committee in accordance with Rule 3.3 of Version 5.0 of the America's Cup Class Rule.*

*Ken McAlpine  
ACC Technical Director  
117 Marine Terrace, Fremantle,  
W.A. 6160 AUSTRALIA  
Phone 61 8 9336 6664  
Fax 61 8 9336 6665  
Email kenmcalpine@compuserve.com*