



Challenge Notice # 02 – 30

Date: 5th September 2002

To: Challengers for America's Cup XXXI

From: W.H. Dyer Jones

Subject: Louis Vuitton Cup Sailing Instructions Draft 4.6 Final

17 Documents:

- Sailing Instructions Draft 4.5 Final
- Appendix A
- Appendix A – Broadcast Equipment
- Appendix A – Drawing 1 – ACTV2
- Appendix A – Drawing 2 – ACTV LVC
- Appendix A – Drawing 3 – ACTV AC1
- Appendix A – Drawing 4- profile-cam-semi
- Appendix A – Drawing 5-profile-cam-fin
- Appendix A – Drawing 6-profile-mic-semi
- Appendix A – Drawing 7-profile-mic-fin
- Appendix A – Drawing 8-Camera Boom 1
- Appendix A – Drawing 9-Camera Boom 2
- Appendix A – Drawing 10-Camera Boom 3
- Appendix A – Drawing 11- Camera Transom 1
- Appendix A – Drawing 12-Camera Transom 2
- Appendix B – RR Pairings
- Appendix B – Quarter & Semi-Final Format
- Appendix C – Course Positions and Rendezvous Coordinates

Ladies and Gentlemen,

Attached herewith, please find attached the Final Draft 4.6 of the Sailing Instructions for the Louis Vuitton Cup.

Yours sincerely,



W.H. Dyer Jones - Regatta Director

SAILING INSTRUCTIONS
Governing the Match Races of the
LOUIS VUITTON CUP
Challenger Selection Races for the 31st Match for America's Cup
October 2002 – February 2003

1. Rules

- 1.1 The races shall be sailed under the Notice of Race and Conditions Governing the Louis Vuitton Cup Challenger Selection Races for the 31st Match for America's Cup October 2002 – February 2003 ("Conditions") including any amendments to those Conditions. All references herein to CORM shall mean CORM – Challenger of Record Management for America's Cup XXXI (NZ) Limited.
- 1.2 Appendix A to these Sailing Instructions provides information and instructions on the Video, Audio and Telemetry equipment to be installed on each yacht by CORM. Syndicates shall permit the installation of and not interfere with the daily maintenance, testing, or normal operation of the supplied equipment and wiring. This includes reasonable, scheduled access by CORM authorized and credentialed technical personnel to each syndicate compound and each yacht for the purposes of this Instruction. Breach of this Sailing Instruction may be protested only by the Race Committee, the Measurement Committee, or the Jury.
- 1.3 All racing yachts will display Louis Vuitton Cup racing pennant decals on their headsails as provided in Condition 5.1(b)(vii) and Conditions Attachment 2. Failure to display this pennant aboard the yacht may be protested only by the Race Committee.

2 Notices to Competitors

- 2.1 Notices to Competitors, including Jury Notices, the time and place of protest hearings, Measurement Notices, and changes in Sailing Instructions, will be posted on the Official Notice Board located at the Jury Office located at Level One, 100 Halsey St., Auckland, (side entrance).
- 2.2 Notices may also be placed in adjacent mailboxes designated for each Challenging Yacht Club ("CYC"), and may be sent by post, courier delivery, facsimile, or e-mail. However, a notice posted on the Official Notice Board will be deemed to have been given to the CYC concerned. Failure for such notices to be placed in mailboxes, or be received by post, delivery, e-mail or facsimile will not be grounds for redress.

3 Amendments to Sailing Instructions

- 3.1 Any amendment made ashore to the Sailing Instructions will be posted on the Official Notice Board before 2000 on the day preceding the day it will take effect
- 3.2 Any amendment to the Sailing Instructions made at sea will be advised to all yachts via the radio provided in Condition 19.4(a), hereafter referred to as the "Safety Radio". Flag "Third Substitute" will be displayed from the Race Committee Signal Boat until all affected yachts have acknowledged their receipt of the amendment.

4 Schedule

- 4.1 The schedule of races for the Round Robins, Quarter-Finals, Quarter-Final Repechage, Semi-Finals, Semi-Final Repechage, and Finals of the Louis Vuitton Cup is contained in Condition 8.2 and Conditions Attachment 4.
- 4.2 The Pairing List for the matches of Round Robin 1 and Round Robin 2 are contained in Appendix B of these Sailing Instructions.
- 4.3 In addition to Condition 8.2, Attachment 4 of the Conditions and Appendix B of the Sailing Instructions are subject to change by the Race Committee.

5 Course Rendezvous Locations

Course rendezvous locations have been established and are contained in Appendix C of the Sailing Instructions. The location for the day will be distributed by fax and/or e-mail before 09.00 on those days when yachts are scheduled to sail one race, and before 07.30 on those days when yachts are scheduled to sail two races. A change of location made at sea may be given either by hail, signal hoist, or by radio.

6 Course Diagram

The course diagrams are shown in Illustration Course "A" and Illustration Course "B" of the Conditions. These diagrams show the order in which marks are to be rounded. All rounding marks are to be left to starboard.

7 Course Signals

- 7.1 The approximate magnetic compass bearing from the starboard (Race Committee Signal Boat) end of the starting line to the first mark (Mark W) will be signaled from the Race Committee Signal Boat with or before the Warning Signal on a course board. This signal shall be repeated from a Race Committee boat at the port end of the Starting Line.

- 7.2 Unless a change is made in accordance with RRS 33, the leeward mark (Mark L) will be positioned 0.25 miles upwind of the Race Committee Signal Boat on the same bearing as signaled in Instruction 7.1.
- 7.3 In the event of a wind shift during the starting sequence for a flight the Race Committee may change the course to a different first mark (Mark W) for the second or subsequent matches. This change shall be made at or before the Warning Signal for the match involved by displaying Flag "C" and repetitive sound signals. The new magnetic compass bearing to the new first mark (Mark W) and the color of that new mark will be displayed on the Race Committee Boat Signal Boat. This signal shall also be repeated from a Race Committee boat at the port end of the Starting Line. This alters RRS 27.1.

8 Match Signals

Signals used during the starting sequence of each match are described in Condition 3.6.

9 Other Signals

- 9.1 When the numeral pennant associated with the start of a particular match is displayed in conjunction with any signal, that signal will apply only to the match so identified.
- 9.2 When a signal is displayed alone, the signal will apply to all matches.
- 9.3 Signals made ashore will be displayed on a signal mast near the office of CORM at 100 Halsey Street, Auckland.
- (a) Flag "AP" made ashore with two sound signals, means: "All races are postponed". If necessary to postpone the day's racing, this signal will be displayed, and broadcast on the Safety Radio, before 0930 on days when yachts are scheduled to sail one race, and before 0730 on days when yachts are scheduled to sail two races.
- (b) The earliest time of the first Warning Signal for each course location will be posted on the Official Notice Board before the lowering of Flag "AP" and, in accordance with Condition 14.1, this time will be not less than three hours after the lowering of Flag "AP". Notice of that posting may be via fax and/or email. Failure to give such electronic notice will not be grounds for redress.
- (c) Any signal made ashore at the CORM signal mast will be accompanied by a posting on the Official Notice Board and may also be transmitted via fax and/or email. Failure to give such electronic notice will not be grounds for redress.

10 Marks

- 10.1 Original Marks of the course will be Orange inflated tetrahedron buoys.
- 10.2 Change Marks, when used in accordance with RRS 33, and Instructions 7.2 and 15, will be Yellow inflated tetrahedron buoys.
- 10.3 The Starting/ FinishMark will be a White inflated tetrahedron buoy.

11 Starting Procedures and Signals

- 11.1 Matches will be started in accordance with the system described in Condition 3.6. RRS 26 and C3.1 do not apply.
- 11.2 A yacht shall not start later than 15 minutes after her starting signal.

12 Starting Line

The Starting Line will be between a staff displaying an orange flag on the Race Committee Signal Boat at the starboard end of the line and the course side edge of a White inflatable buoy at the port end.

13 Individual Recalls

Flags displayed in accordance with C3.2(b) will be on the course side of the orange starting flag. The sound signal will be a gun. The Race Committee will broadcast the color of the yacht's identification flag via the safety radio provided under Condition 19.4(a). Failure of the radio advice to be given or received will not be grounds for redress.

14 Abandonment and Postponements

- 14.1 When an abandonment or postponement signal is made, subsequent matches will be postponed accordingly.
- 14.2 If on any race day all matches are postponed or abandoned to a later day, they will be sailed on the next scheduled race day. Should;
 - (a) all matches be postponed or abandoned to a later day on the last scheduled reserve day of Round Robin 1 , and if
 - (b) it is decided by the Race Committee that the races will be sailed on the first day of Round Robin 2 instead of continuing Round Robin 1 until all races of that Round Robin are concluded,

then the yachts (including substitute yachts) will sail the postponed races in the configuration in which they are measured for Round Robin 2. A new racing schedule will be posted by 2000 on the day of the postponement or abandonment.

- 14.3 If on any race day some but not all matches are postponed or abandoned to a later day, then the schedule for re-sailing the postponed and abandoned races will be posted by 2000 on the day preceding the re-sail and not later than the last scheduled reserve day of that Round Robin or series.
- 14.4 The Race Committee Signal Boat will measure the wind in the starting/finishing area for the purposes of complying with Conditions 14.2(a) and 14.6.

15 Change of Course after the Start

- 15.1 Any change of course after the start will be made in accordance with RRS 33 except that the new mark may not be in position before the yachts begin sailing the leg being changed and the length of the legs shall not be changed. Change Marks will be as described in Instruction 10. In the event of a subsequent change of course, the changed mark will be an Original Mark. Thereafter changed marks will alternate between Change Marks and Original Marks. This alters RRS 33.
- 15.2 A change of course will be signaled by a Race Committee or Umpire boat in the vicinity of the mark commencing the leg to be changed. Along with the requirements of RRS 33, the Race Committee will display an orange or yellow colored placard to indicate the color of the next mark to be rounded. If Umpire Boats signal a change the Umpire Boats will display Flag "C" only. The Race Committee may broadcast the approximate new magnetic compass bearing to the changed mark via the Safety Radio. Failure of the radio advice to be given or received will not be grounds for redress
- 15.3 In the event of a change of course, the Finishing Line will be moved to maintain the course configuration.

16 Finishing Line

The Finishing Line will be between a staff displaying an orange flag on a Race Committee boat and the course side edge of a White inflated buoy. The Race Committee boat marking the Finishing Line may be a different boat from the Race Committee Signal Boat that marked the Starting Line.

17 Protests

- 17.1 Flag "Y" used in accordance with RRS C6.1(a) shall be not less than 60cm on the hoist and 60cm on the fly.
- 17.2 The red protest flag used in accordance with RRS 61.1 and C6.1(b) shall be not less than 40cm on the hoist and 40cm on the fly.
- 17.3 Written protests shall be lodged at the Jury Office located at Level One, 100 Halsey Street, Auckland (side entrance). Lodgment by facsimile will be accepted. The protest time limit shall be two and one-half-hours from the time the last yacht in the affected match finishes its last race of the day.
- 17.4 Protest Notices will be posted on the Official Notice Board each day within 30 minutes after the protest time limit to inform competitors where and when there is a hearing in which they are parties to a protest or named as witnesses. Such protest notice may also be sent to the appropriate parties via email and/or fax. Failure to receive the notice via email or fax shall not constitute grounds for redress. A protest notice posted on the Official Notice Board will be deemed to have been given to the CYC concerned.
- 17.5 The Jury will hear protests in the approximate order of receipt and hearings shall begin at the time posted with the protest notices.
- 17.6 A party bringing evidence that requires electronic or other special equipment shall provide such equipment.
- 17.7 Delete RRS 64.1(c). Substitute: "If a yacht has broken a rule when not racing, the Jury may apply her penalty in any manner it deems equitable."
- 17.8 At least two representatives of each CYC with a yacht involved in a protest will have the right to be present as parties to the hearing. This alters RRS 63.3(a).

18 Scoring

- 18.1 The scoring system shall be in accordance with Conditions 8 and 17.
- 18.2 In the case of a yacht withdrawing from any further competition in a series before completion of that series, then:
- (a) The results of all races in any series in which a withdrawn yacht has competed will stand.

- (b) The remaining matches in that series involving the withdrawn yacht will be forfeited and the points for any remaining matches of that series will be awarded to its scheduled opponent(s) which need not start or sail the course.
- 18.3 For the purpose of this Sailing Instruction, Round Robin 1 and Round Robin 2 shall be separate series.

19 Identification

- 19.1 The yellow and blue identifying flags required by RRS C4.1 shall be not less than 60cm on the hoist and 60cm on the fly and conspicuously displayed on the stern deck or transom.
- 19.2 Support boats associated with competitors shall be required to carry identification flags. Such flags and their means of display shall be as directed by the Race Committee.
- 19.3 Prior to the Attention Signal, the Race Committee Signal vessel on station at the Starting Line and Finish Line may display a race committee flag with a blue field. Other race committee vessels will display a race committee flag with a yellow field. The Race Committee will give notice of how official vessels, spectator course marshal vessels, and any other official support craft will be identified.

20 Support & Weather Boats

- 20.1 Until the Preparatory Signal of the first scheduled match, there is no restriction on the activity of CYC Weather Boats ("Weather Boats").
- 20.2 Further to Condition 20, Weather Boats may conduct their weather assessments inside the racecourse area designated by the Course Marshall after the first Preparatory Signal, with the following restrictions:
- (a) Weather Boats shall not be longer than fourteen (14) metres in length.
 - (b) Weather Boats shall confine their activity to the upper 40% of the anticipated course area toward Mark W.
 - (c) Not more than two Weather Boats per CYC may perform their duties in the above mentioned area.
 - (d) At or before the Preparatory Signal for their respective match, weather boats shall begin to remove themselves to positions outside the racecourse area designated by the Course Marshall.

- (e) At or before the Starting Signal for their respective match, weather boats shall be clear of the racing area designated by the Course Marshall.
 - (f) At no time will the weather boats be permitted to approach or interfere with any yacht while racing, nor shall they be permitted to be within 200 meters of such racing yachts while performing their duties.
 - (g) This privilege may be revoked at any time under the direction of the Race Officer in charge of each racecourse on VHF Channel 17.
 - (h) Breach of this Sailing Instruction may be protested by the Race Committee only. Such protest would be against the CYC Yacht whose Weather Boat failed to comply with this Sailing Instruction.
- 20.3 After the Preparatory Signal for the first scheduled match, no CYC ACC yacht other than an ACC yacht scheduled to compete that day, and its accompanying Chase Boat, shall enter or be on the racecourse area designated by the Course Marshall.

21 Disclaimers

- 21.1 All those taking part in the regatta do so at their own risk and responsibility. Neither Yacht Club Punta Ala, CORM, the Race Committee, the Umpires, the International Jury, the Measurement Committee, the Arbitration Panel, any sponsor or supplier nor their respective members, employees, servants and agents, nor any of them, shall have any responsibility for loss, damage, injury, penalty, or inconvenience which might occur to persons or things, ashore or at sea, as a consequence of participation in any way in this Regatta.
- 21.2 Neither CORM nor its Race Committee shall have any responsibility for the seaworthiness of a yacht or the sufficiency or adequacy of its equipment.
- 21.3 Attention is drawn to Fundamental Rule 4 of the RRS that states: "The responsibility for a boat's decision to participate in a race or to continue racing is hers alone."
- 21.4 Neither CORM nor the Race Committee shall have any responsibility to provide rescue or medical services, at sea or ashore, or to provide any other form of assistance to the participants.

5 September 2002

The Race Committee
Louis Vuitton Cup
Challenger Selection Races for the America's Cup

APPENDIX A

This Appendix A forms part of the Sailing Instructions.

Video, Audio and Telemetry System Equipment and Installation

1 IN GENERAL

The following equipment is to be installed on each yacht entered in the Regatta to facilitate the transmission of video, audio, positional, and wind information from each yacht as set out in the Notice of Race and Conditions Governing the Louis Vuitton Cup.

Syndicates shall permit the installation of and not interfere with the daily maintenance, testing, or normal operation of the supplied equipment and wiring. This includes reasonable, scheduled access by CORM authorized technical personnel to each syndicate compound and each yacht.

The equipment and wiring will be supplied by CORM or its authorized contractors, except for the aerial frame, which is to be fabricated and mounted on the stern of the yacht by each team, and the batteries and charger associated with the telemetry system. Batteries to power audio and video equipment will be provided. Syndicates are required to have all batteries fully charged for each day of racing.

The layout of this equipment is to be generally as set out in the drawings provided in this Appendix. Under no circumstance is equipment to be altered or any wiring to be cut without the consent of CORM.

All equipment installed on the yacht, including cameras, batteries, aerial frame, transmitter boxes, compass, etc, required by CORM for the television and audio production shall be considered 'outside' of measurement. That is, it shall not be included in the weight of the yacht in the calculation of rating, nor be present at flotation, and an allowance given for the equipment's weight at any post-race measurement.

The wiring, connection and installation of the various pieces of equipment specified below are to be carried out at the direction of CORM. The equipment carried by each yacht will vary from day to day depending on the broadcast schedule for each stage of the Regatta.

2 TELEVISION CAMERAS AND TV SIGNAL TRANSMISSION

Up to six video cameras are to be fitted to each yacht.

If, on a particular day, only one yacht in a match race pair is fitted with cameras, the other yacht shall be fitted with dummy 'cameras' and equipment of equivalent size and weight as though they were operational cameras and equipment. If neither of the two yachts in a match race pair is fitted with cameras and associated equipment,

neither will be required to be fitted with dummy cameras and equipment.

Each camera is to be fitted with quick connect couplings to enable them to be easily installed and removed from the wiring permanently installed in the yacht. Wiring access into the interior of each yacht shall be via a watertight gland adjacent to the aft aerial frame stanchion base.

Two cameras are to be fitted on the main boom.

One "lipstick" type camera is to be fitted just forward of the mast, below deck, looking forward.

Two cameras are to be fitted to the aerial frame at the stern of the yacht.

3 AUDIO TRANSMISSION

Each yacht will be fitted with up to 6 wired microphones and 3 wireless microphones.

Transmissions from the wireless microphones are to be received by a dedicated aerial mounted on the aft aerial frame. Feed from the aerial and the wired microphones is to be led to an CORM supplied audio mixer receive/transmitter box mounted on each leg of the aerial frame. The audio signal is to be transmitted from this box via the aerial frame at the stern of the yacht.

4 TELEMETRY AND WIND DATA TRANSMISSION SYSTEM

Telemetry and wind data transmission system aerials are to be mounted on the aerial frame aft and led to the DGPS receiver.. Serial data limited to the wind speed and direction, and the magnetic compass heading is to be back-fed to the telemetry transmission system. This information is to be integrated with the DGPS positional information and supplied to the telemetry transmission equipment. The transmission signal is to be led to the aft aerial frame for transmission off the yacht.

5 AERIAL FRAME

The aerial frame is to be fabricated from aluminum extrusion to dimensions shown. The cross tree on the top of the frame shall be aft of the runners and at least 0.5 meters aft of AGS and not less than 2.250 meters above MWL. Other aerials may be mounted on this frame only if they do not interfere physically or electronically with the CORM equipment, transmission or reception. Syndicates shall cooperate with CORM as necessary in solving any radio frequency or

other interference problems associated with this equipment and the yacht's equipment

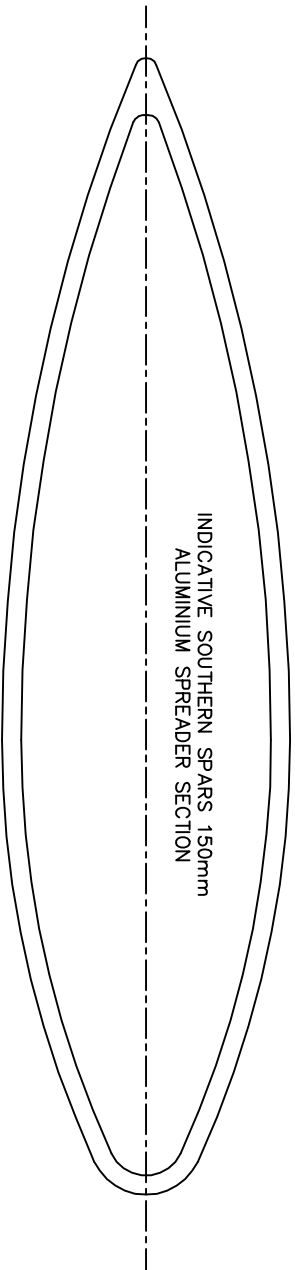
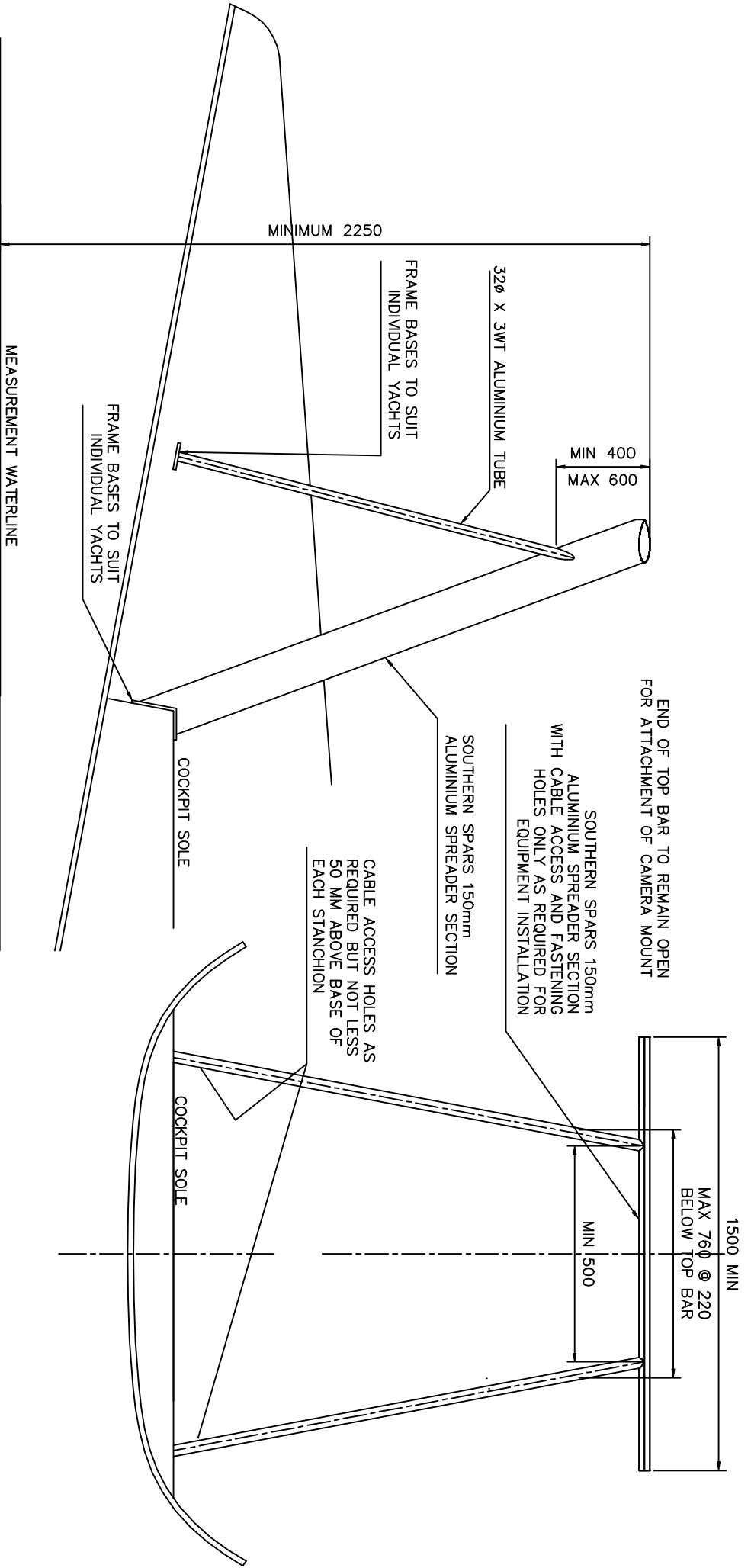
APPENDIX A

This Appendix A forms part of the Sailing Instructions.

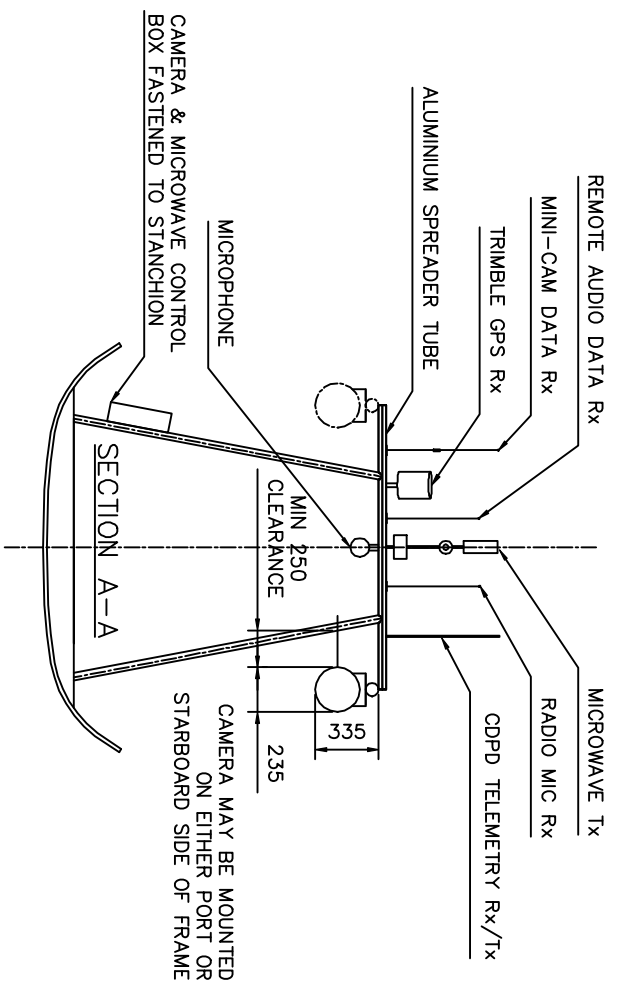
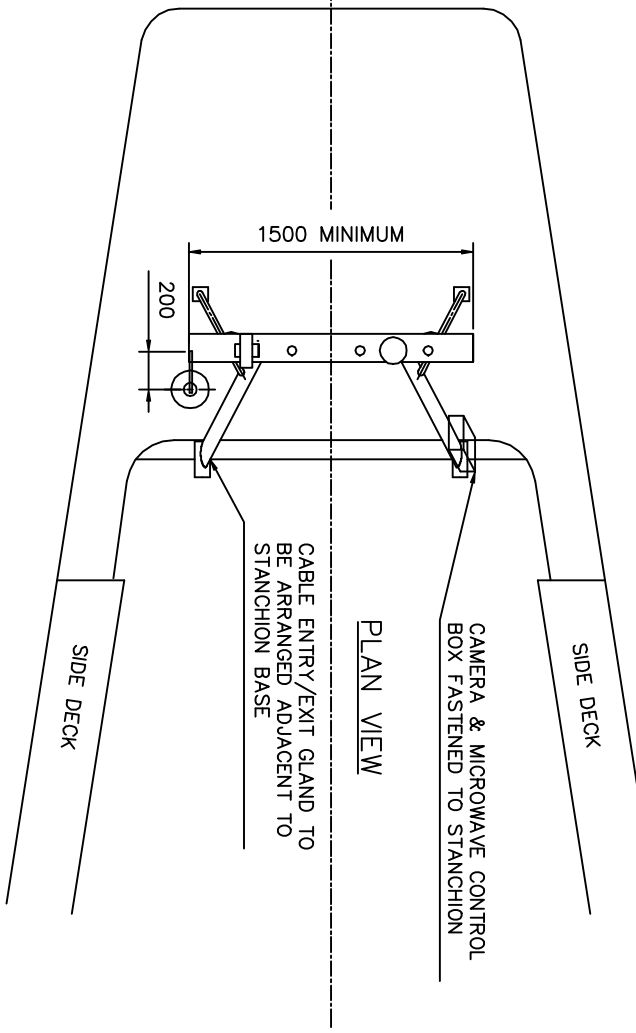
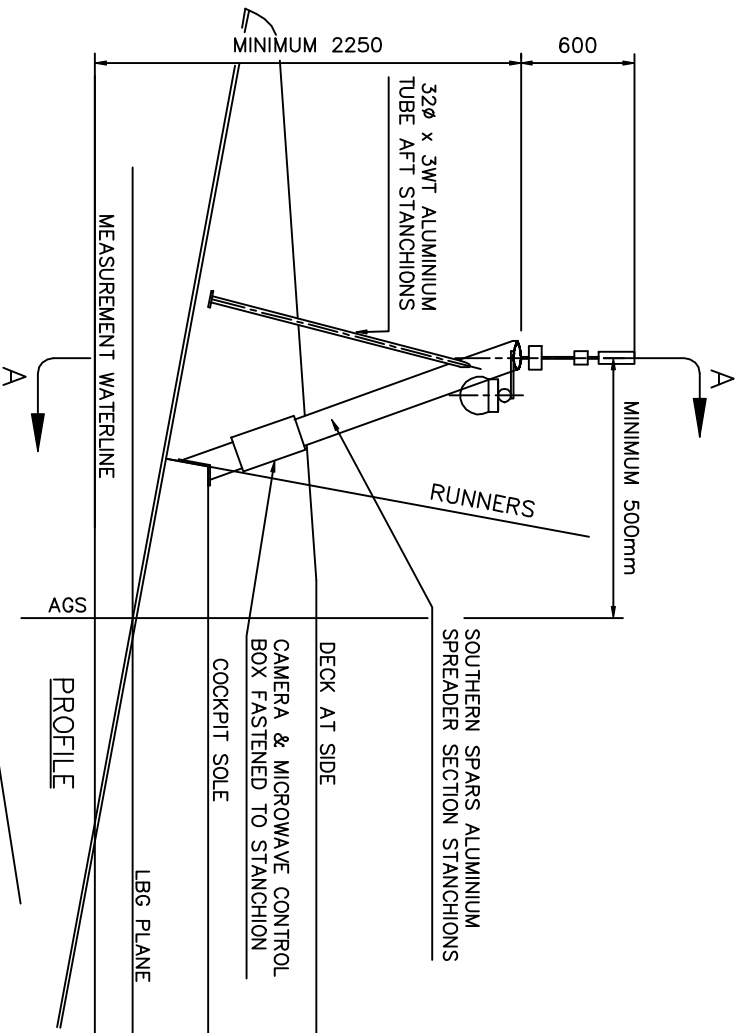
Broadcast Equipment

On-board Broadcast Equipment, as required including, but not limited to:

- 1 Aerial Frame (“AF”) approved by CORM for the mounting of specialised television and positioning data equipment.
- 1x GPS Unit and associated aerials mounted on AF.
- 1x Data Transmission Aerial mounted on AF.
- Power supply and equipment box for GPS Data and associated transmitter mounted below decks at a location to be agreed by CORM.
- 2x Microwave Transmission Antenna mounted on AF.
- 2x TV Camera Telemetry Antennae mounted on AF.
- 2x TV Remote Cameras mounted on AF.
- 4x TV Remote Camera Control Boxes and associated power supply mounted on AF.
- 2x Microwave and Audio Transmission Boxes mounted below decks at a location to be agreed by CORM.
- Power supply for Microwave and Audio Transmission Boxes mounted below decks at a location to be agreed by CORM.
- 2x TV Remote Cameras mounted on boom at a location to be agreed by CORM.
- 1x TV Remote fixed “lipstick” type Camera to be mounted below deck at a location to be agreed by COR/D.
- 4x Radio microphones to be worn by crew members and or the “17th person”.
- 8x Effects microphones placed on deck of race yacht at locations to be agreed by CORM
- Associated cabling for above equipment, which shall be of approximately equal weight and length. No wiring is to be cut without the consent of CORM.



PROJECT	AMERICAS CUP TELEVISION		
TITLE	AERIAL FRAME		
CLIENT	ACTV	CHECKED	DRAWING No.
DRN.	S.R. & K M	STATUS	ACTV-2
DATE	16-07-02	Construction	REV.
SCALE	N.T.S		F

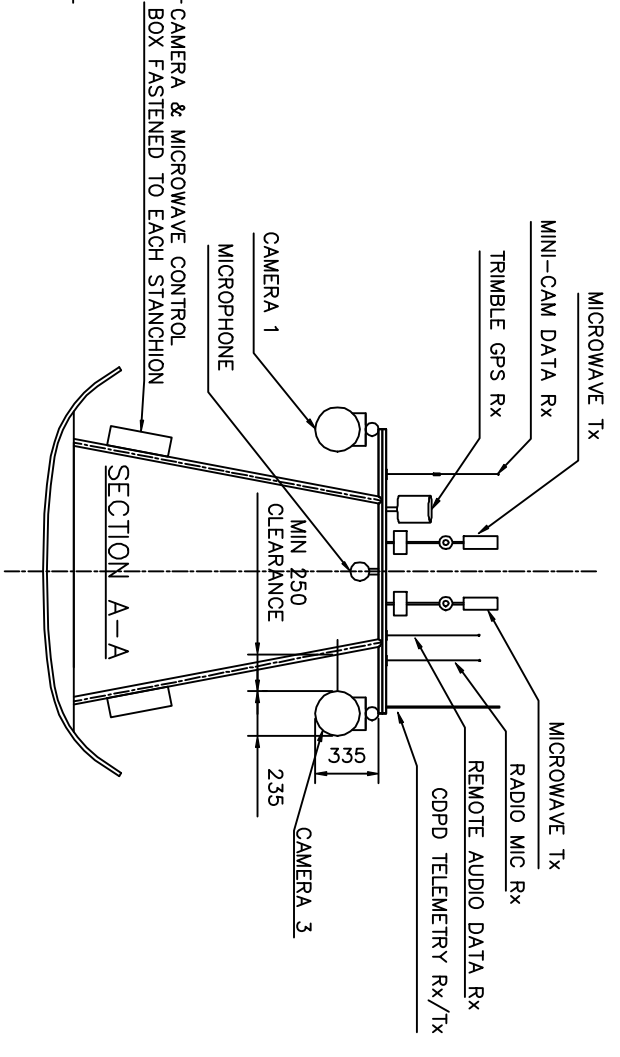
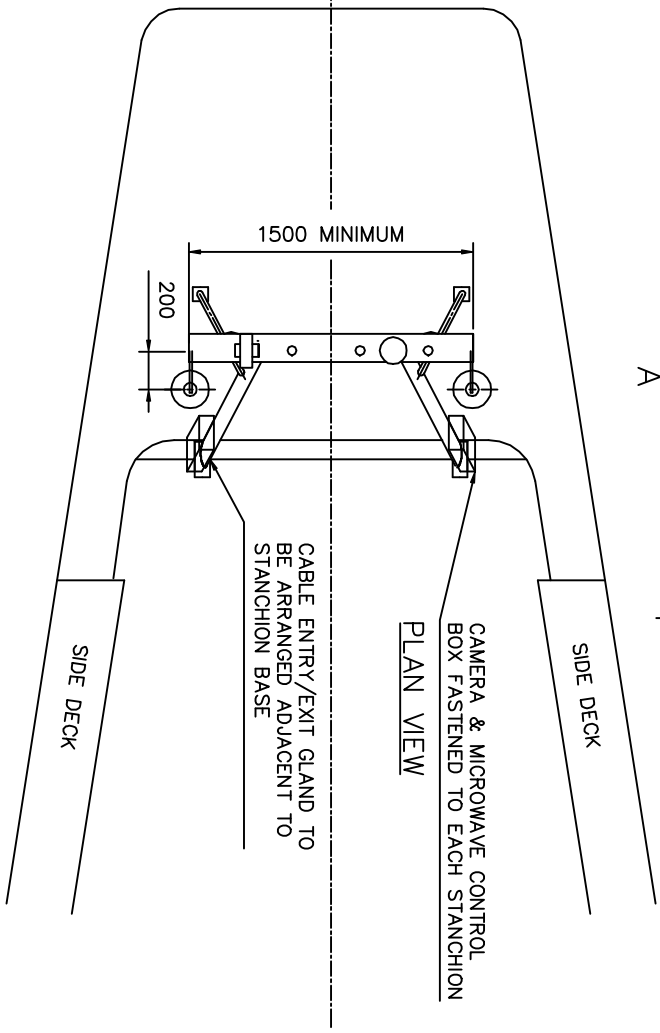
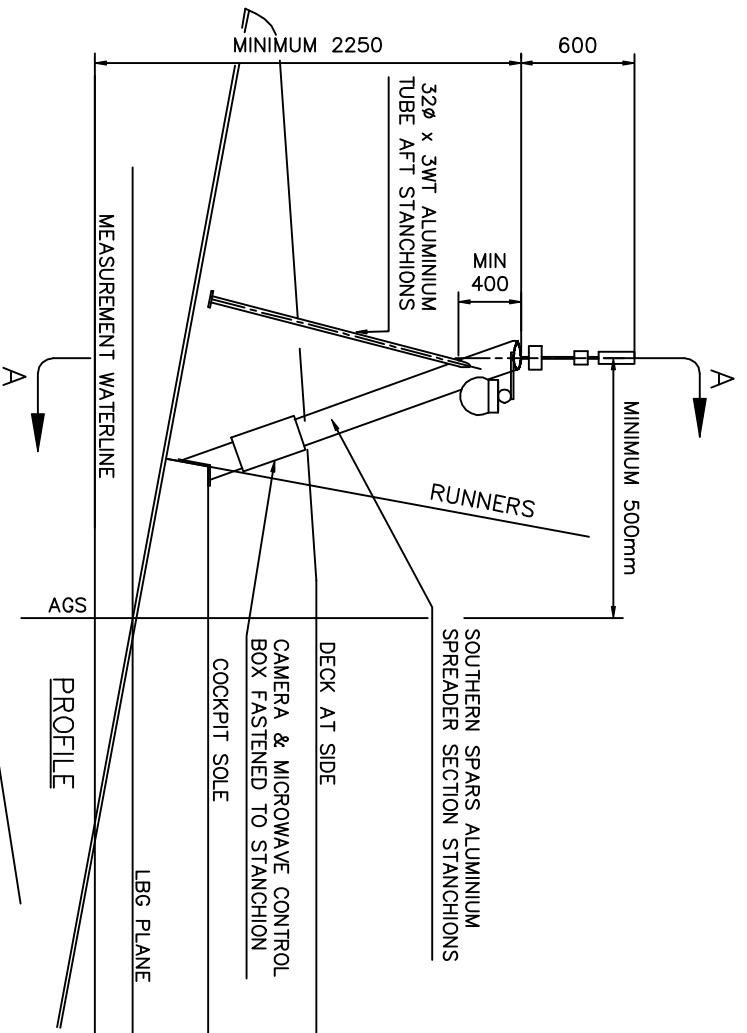


NOTES

1. CAMERAS ARE ENCLOSED IN CLEAR DOWNS WITH CAMERA MOVING INSIDE DOWNS. THE LEGS FOR THE FRAME ARE TO BE LOCATED INSIDE THE CAMERAS SO THAT THE CAMERAS CAN GET 180 DEGREE PLUS HORIZON SHOTS.
2. OTHER AERIALS MAY BE MOUNTED ON THE AERIAL FRAME BUT ONLY IF THEY DO NOT INTERFERE PHYSICALLY AND ELECTRONICALLY WITH THE AMERICA'S CUP TELEVISION EQUIPMENT, TRANSMISSION AND RECEPTION.
3. FRAME TO BE FABRICATED FROM ALUMINIUM USING SOUTHERN SPARS 150 MM SPREADER SECTION & 320 X 3 WT TUBE.
4. BATTERY TO POWER TELEVISION EQUIPMENT MAY BE MOUNTED ANYWHERE INSIDE THE HULL AS PERMITTED BY THE SUPPLIED CABLE. THE SUPPLIED 15M CABLE SHALL NOT BE CUT BUT MAY BE COILED TO SUIT INSTALLATION.
5. SUPPLIED TELEVISION EQUIPMENT CABLE(S) SHALL NOT BE CUT BUT MAY BE COILED TO SUIT INSTALLATION.
6. ALL DIMENSIONS IN MILLIMETRES

THIS CONFIGURATION FOR ROUND ROBINS, QUARTER FINALS AND SEMIFINALS. MORE AERIALS AND EQUIPMENT WILL BE ADDED FOR THE LVC FINAL AND THE AC MATCH

PROJECT		AMERICA'S CUP TELEVISION	
TITLE		AFT TELEVISION CAMERA AND AERIAL ARRANGEMENT	
CLIENT	ACTV	CHECKED	DRAWING No.
DRN.	S.R. & KM	STATUS	ACTV-LVC-1
DATE	16-07-02	APPROVAL	REV.
SCALE	N.T.S		F



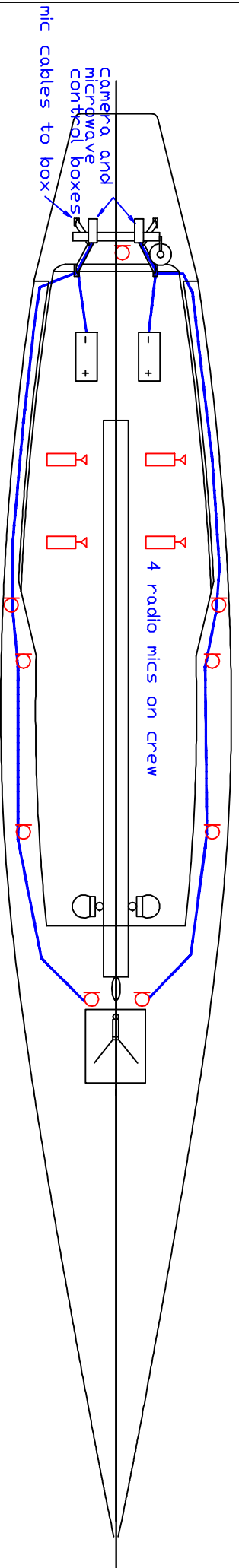
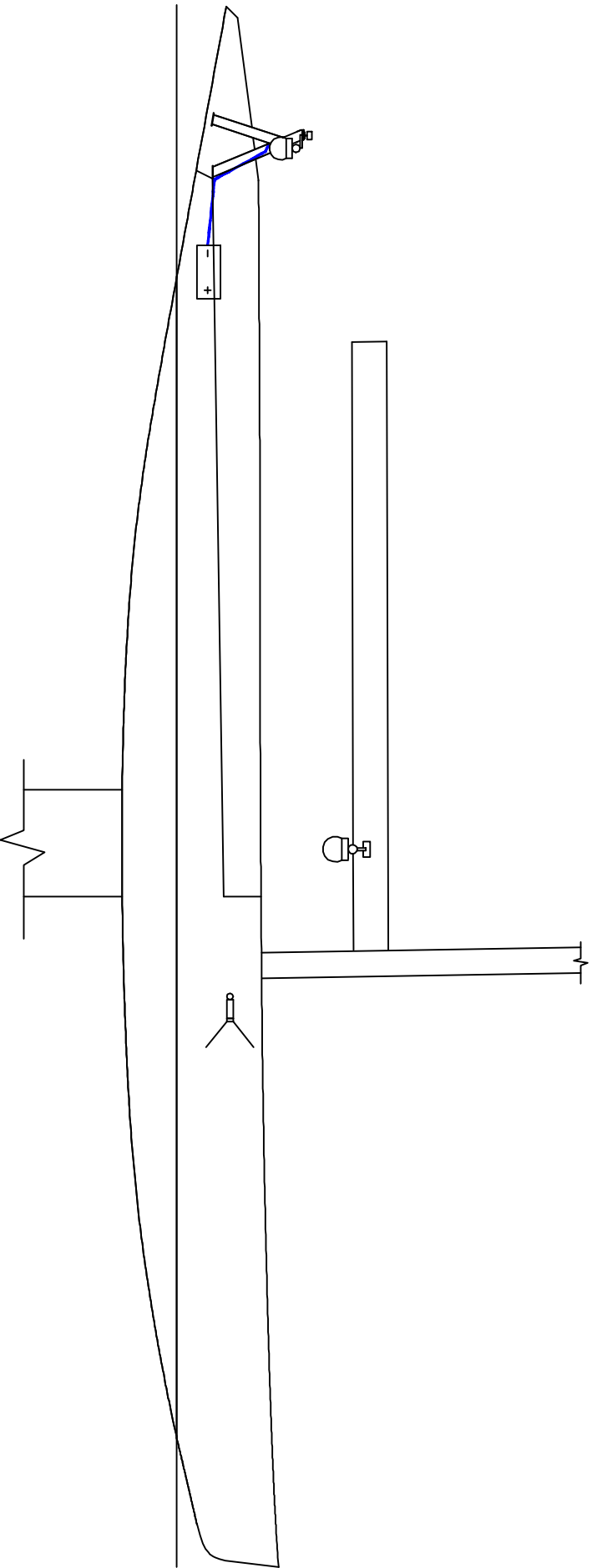
NOTES

1. CAMERAS ARE ENCLOSED IN CLEAR DOWNS WITH CAMERA MOVING INSIDE DOWNS. THE LEGS FOR THE FRAME ARE TO BE LOCATED INSIDE THE CAMERAS SO THAT THE CAMERAS CAN GET 180 DEGREE PLUS HORIZON SHOTS.
2. OTHER AERIALS MAY BE MOUNTED ON THE AERIAL FRAME BUT ONLY IF THEY DO INTERFERE PHYSICALLY AND ELECTRONICALLY WITH THE AMERICA'S CUP TELEVISION EQUIPMENT, TRANSMISSION AND RECEPTION.
3. FRAME TO BE FABRICATED FROM ALUMINIUM USING SOUTHERN SPARS 150 MM SPREADER SECTION & 320 X 3 WT TUBE.
4. BATTERY TO POWER TELEVISION EQUIPMENT MAY BE MOUNTED ANYWHERE INSIDE THE HULL AS PERMITTED BY THE SUPPLIED CABLE. THE SUPPLIED 15M CABLE SHALL NOT BE CUT BUT MAY BE COILED TO SUIT INSTALLATION.
5. SUPPLIED TELEVISION EQUIPMENT CABLE(S) SHALL NOT BE CUT BUT MAY BE COILED TO SUIT INSTALLATION.
6. ALL DIMENSIONS IN MILLIMETRES

THIS CONFIGURATION FOR LVC FINAL & AMERICA'S CUP MATCH

PROJECT		AMERICA'S CUP TELEVISION	
TITLE		AFT TELEVISION CAMERA AND AERIAL ARRANGEMENT	
CLIENT	ACTV	CHECKED	DRAWING No.
DRN.	S.R. & KM	STATUS	ACTV-AC-1
DATE	16-07-02	APPROVAL	REV.
SCALE	N.T.S		F

TWZZ Technology



camera and microphone control boxes
mic cables to box

4 radio mics on crew

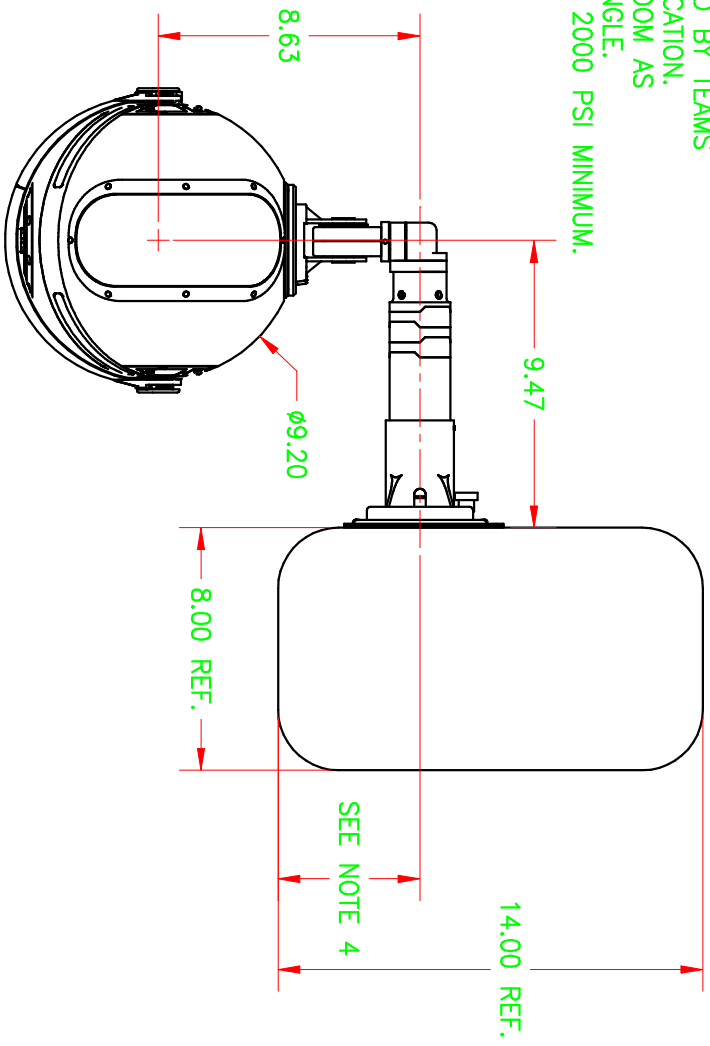
DATE	REVISION	INITIAL
***	*****	

TITLE	DRAWN	ORIGIN	DATE
Microphone Positions	D/W/P	KC	6/02
SUBTITLE			
Finals			

DRAWING NUMBER
profile_mic_fm

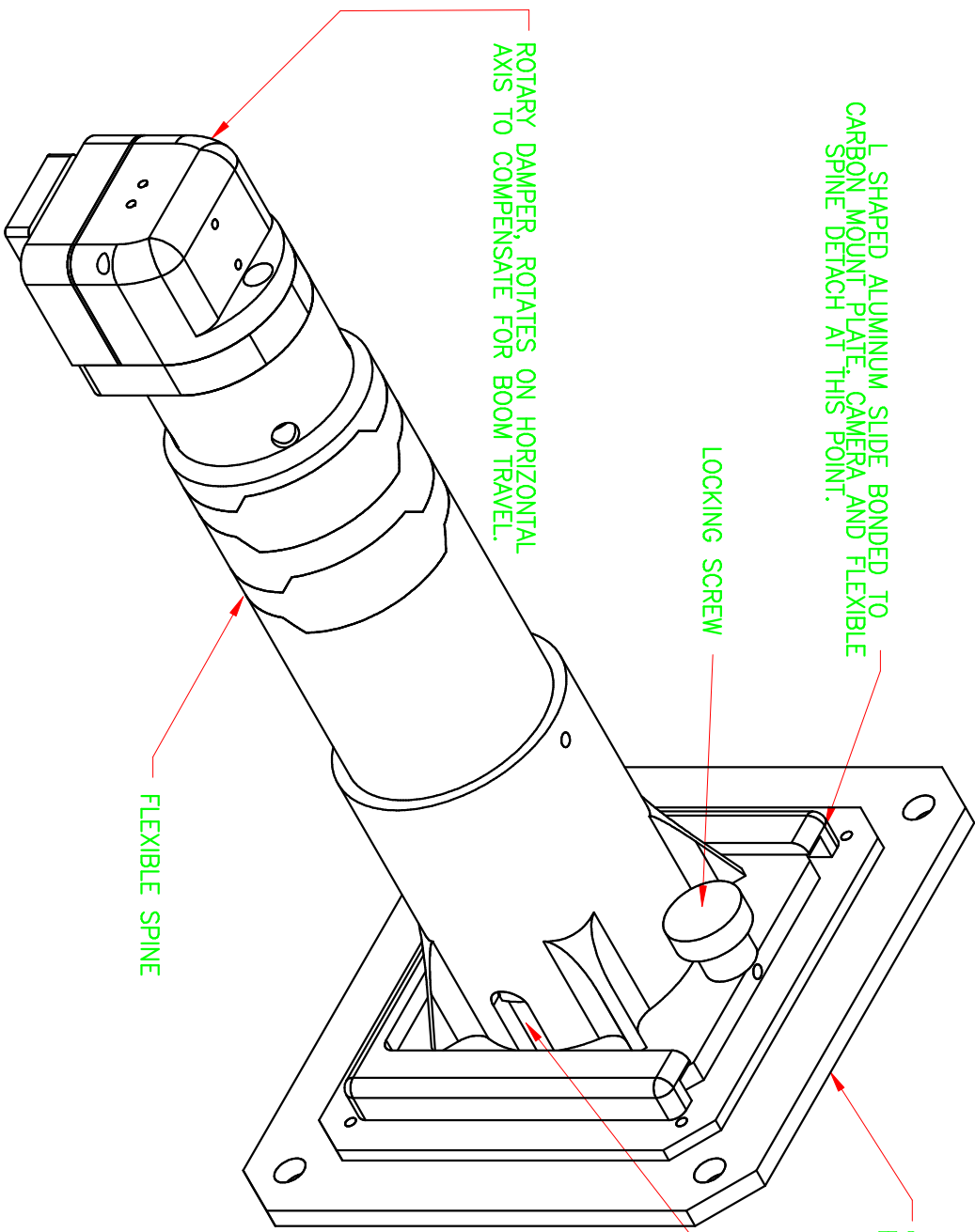
REVISIONS				
ZONE	LTR	DESCRIPTION	DATE	APPROVED

- NOTES: UNLESS OTHERWISE SPECIFIED.
- CAMERA TO BE MOUNTED 600 mm FROM GOOSENECK.
 - BOOM SIZE 8" X 14" FOR REFERENCE, ACTUAL SIZE BOAT DEPENDENT.
 - PART NO. AC03120 "BASE, BOOM CAMERA" SUPPLIED BY BROADCAST SPORTS TO BE INSTALLED BY TEAMS BY BONDING TO BOOM AT SPECIFIED LOCATION.
 - CAMERA MOUNT TO BE ATTACHED TO BOOM AS LOW AS POSSIBLE FOR BEST VIEWING ANGLE.
 - MOUNT TO BOOM BOND LINE STRENGTH 2000 PSI MINIMUM.
 - ALL DIMENSIONS ARE GIVEN IN INCHES.



QTY	CAGE CODE	PART OR IDENTIFYING NUMBER	FND NO.	NOMENCLATURE OR DESCRIPTION	SPECIFICATION	NOTES & REF DESIGNATIONS
PARTS LIST						
UNLESS OTHERWISE SPECIFIED		PROJECT NAME		BROADCAST SPORTS TECHNOLOGY		
2 PLACE DEC ±		AMCUP 03		1360 Bird Drive, Suite A Orem, Utah, 84057-2113 U.S.A. Phone No. (410) 672-3800		
3 PLACE DEC ±		M. DONAHOO		CAMERA BOOM MOUNTING		
SHARP EDGES.		C		ICD		
*DENOTES COMMERCIAL TOLERANCES APPLY.		APPROVED		SIZE DRAWING NUMBER		
DIMENSIONS AND TOLERANCES SHALL BE HELD AFTER PLATING.		APPROVED		B AC03150		
DIMENSIONING & TOLERANCING ARE BASED ON ANSI Y14.5M		FINISH		SCALE NONE		
				SHEET 1 OF 3		

QUESTIONS RELATED TO CAMERA MOUNTING MAY BE DIRECTED TO MEL DONAHOO AT MDONAHOO@WESCAM.COM



L SHAPED ALUMINUM SLIDE BONDED TO CARBON MOUNT PLATE, CAMERA AND FLEXIBLE SPINE DETACH AT THIS POINT.

LOCKING SCREW

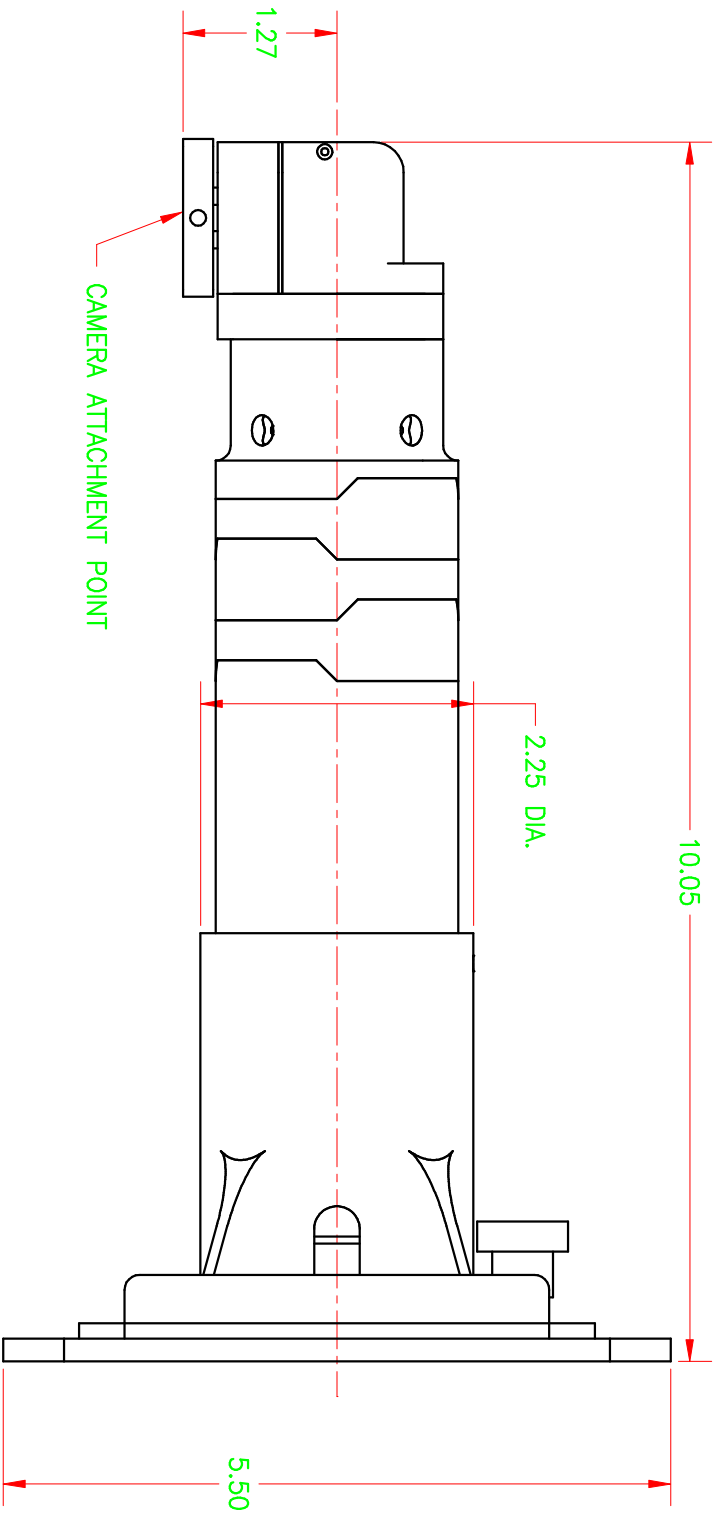
ROTARY DAMPER, ROTATES ON HORIZONTAL AXIS TO COMPENSATE FOR BOOM TRAVEL.

FLEXIBLE SPINE

CARBON FIBER MOUNT, BOND OR SCREW TO BOAT BOOM. THIS PART STAYS WITH BOAT.

CABLE EXIT SHOWN AND 180° OPPOSITE FOR PORT AND STARBOARD BOOM MOUNT.

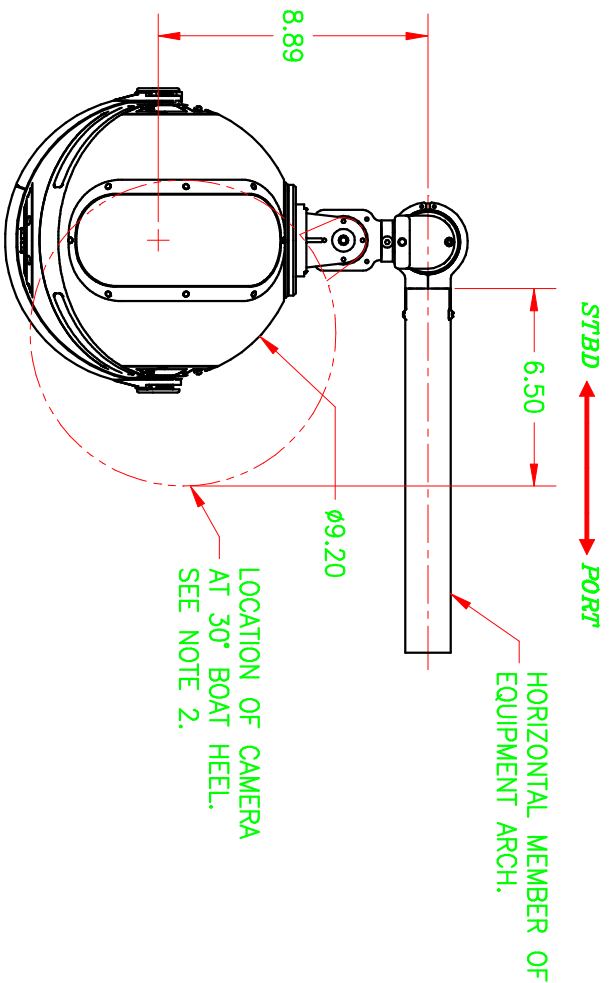
SIZE	DRAWING NUMBER
B	AC03150
SCALE	SHEET
NONE	2 OF 3



SIZE	DRAWING NUMBER
B	AC03150
SCALE	SHEET
NONE	3 OF 3

REVISIONS				
ZONE	LTR	DESCRIPTION	DATE	APPROVED

- NOTES: UNLESS OTHERWISE SPECIFIED.
1. CAMERA MOUNT BOLTED TO END OF HORIZONTAL SPAR, CAMERA INSTALLED AND REMOVED DAILY.
 2. CAMERA ROTATES TO MAINTAIN HORIZON. SUFFICIENT CLEARANCE MUST BE MAINTAINED TO VERTICAL SUPPORT MEMBERS OF EQUIPMENT ARCH TO ALLOW MOVEMENT OF CAMERA.
 3. ALL DIMENSIONS ARE GIVEN IN INCHES.



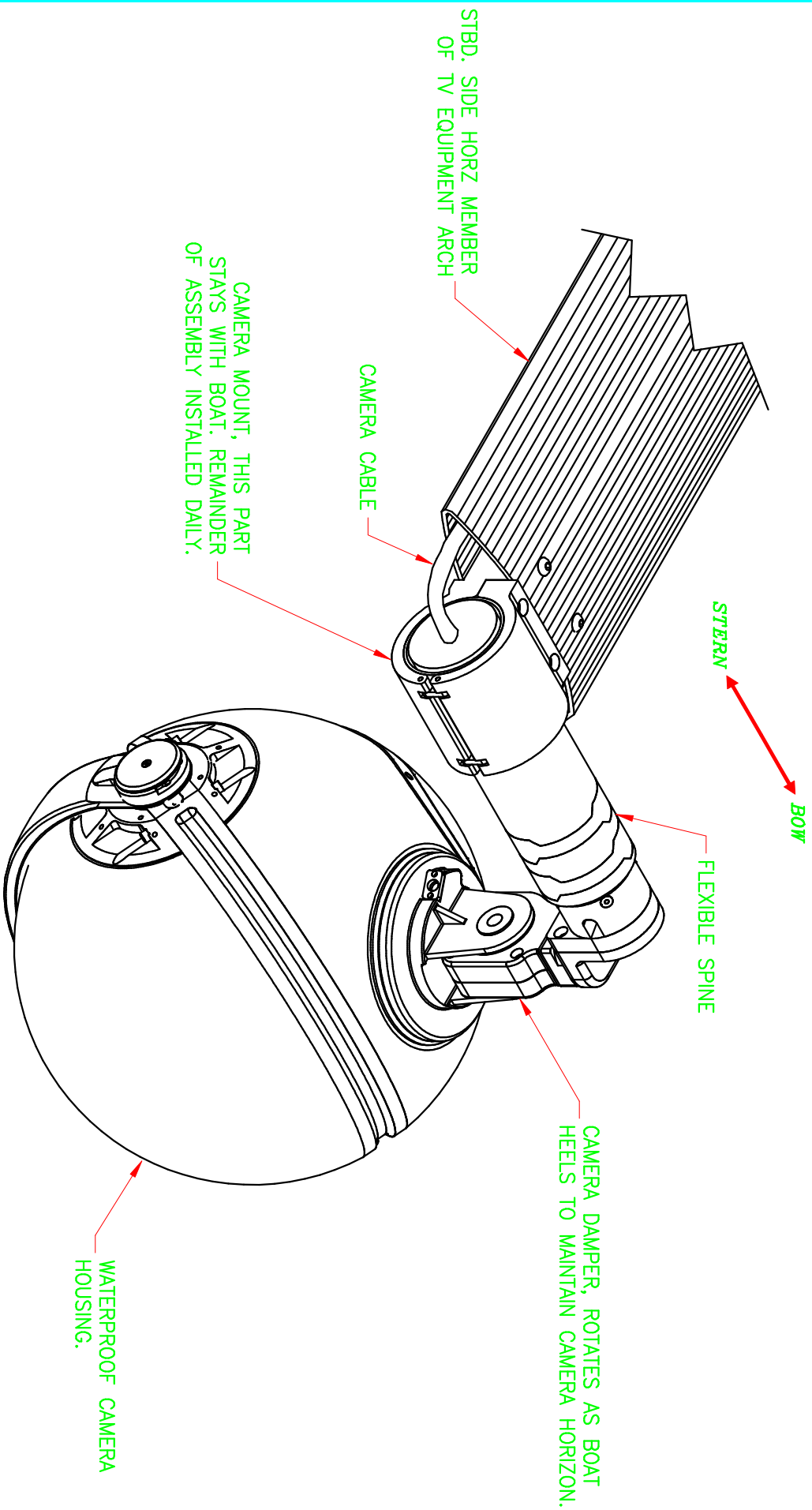
VIEW LOOKING AFT

DIMENSIONS ARE IN INCHES.
 2 PLACE DEC ±
 REMOVE ALL BURRS AND SHARP EDGES.
 * DENOTES COMMERCIAL TOLERANCES APPLY.
 DIMENSIONS AND TOLERANCES SHALL BE HELD AFTER PLATING.
 DIMENSIONING & TOLERANCING ARE BASED ON ANSI Y14.5M

QTY	CAGE CODE	PART OR IDENTIFYING NUMBER	FND NO.	NOMENCLATURE OR DESCRIPTION	SPECIFICATION	NOTES & REF DESIGNATIONS
PARTS LIST						
		PROJECT NAME				
		UNLESS OTHERWISE SPECIFIED				
		2 PLACE DEC ±				
		REMOVE ALL BURRS AND SHARP EDGES.				
		3 PLACE DEC ±				
		* DENOTES COMMERCIAL TOLERANCES APPLY.				
		DIMENSIONS AND TOLERANCES SHALL BE HELD AFTER PLATING.				
		DIMENSIONING & TOLERANCING ARE BASED ON ANSI Y14.5M				
		FINISH				
		APPROVED				
		APPROVED				
		SCALE				
		NONE				
		SIZE				
		B				
		DRAWING NUMBER				
		AC03151				
		SHEET				
		1				
		OF				
		2				

BROADCAST SPORTS TECHNOLOGY
 1360 Blvd Drive, Suite A
 Orem, Utah 84058 21113 U.S.A.
 Phone No. (410) 672-3800

CAMERA TRANSONOM MOUNTING
 ICD



SIZE	DRAWING NUMBER
B	AC03151
SCALE	SHEET
NONE	2 OF 2

Appendix B

This Appendix B forms part of the Sailing Instructions.

Rounds Robin Pairing List

The attached Pairing List shall apply for Round Robin 1 and Round Robin 2 based upon 9 entered yachts. Should the number of entered yachts change, the Race Committee issue another Pairing List.

A Competitor's Meeting and Press Conference will be held at 08.00 on Monday 30 September 2002 at the Louis Vuitton Cup Media Centre, Hobson Wharf, Auckland. The nominated Skipper or Helmsman of each entered yacht shall attend the Competitor's Meeting.

At the Meeting two drawings will be held. The first will determine the order in which each team is to draw. In the second drawing, each team will draw a letter to determine its position in the Pairing List. Yacht will retain the same letter for Round Robin 1 and Round Robin 2 unless a new drawing is necessary.

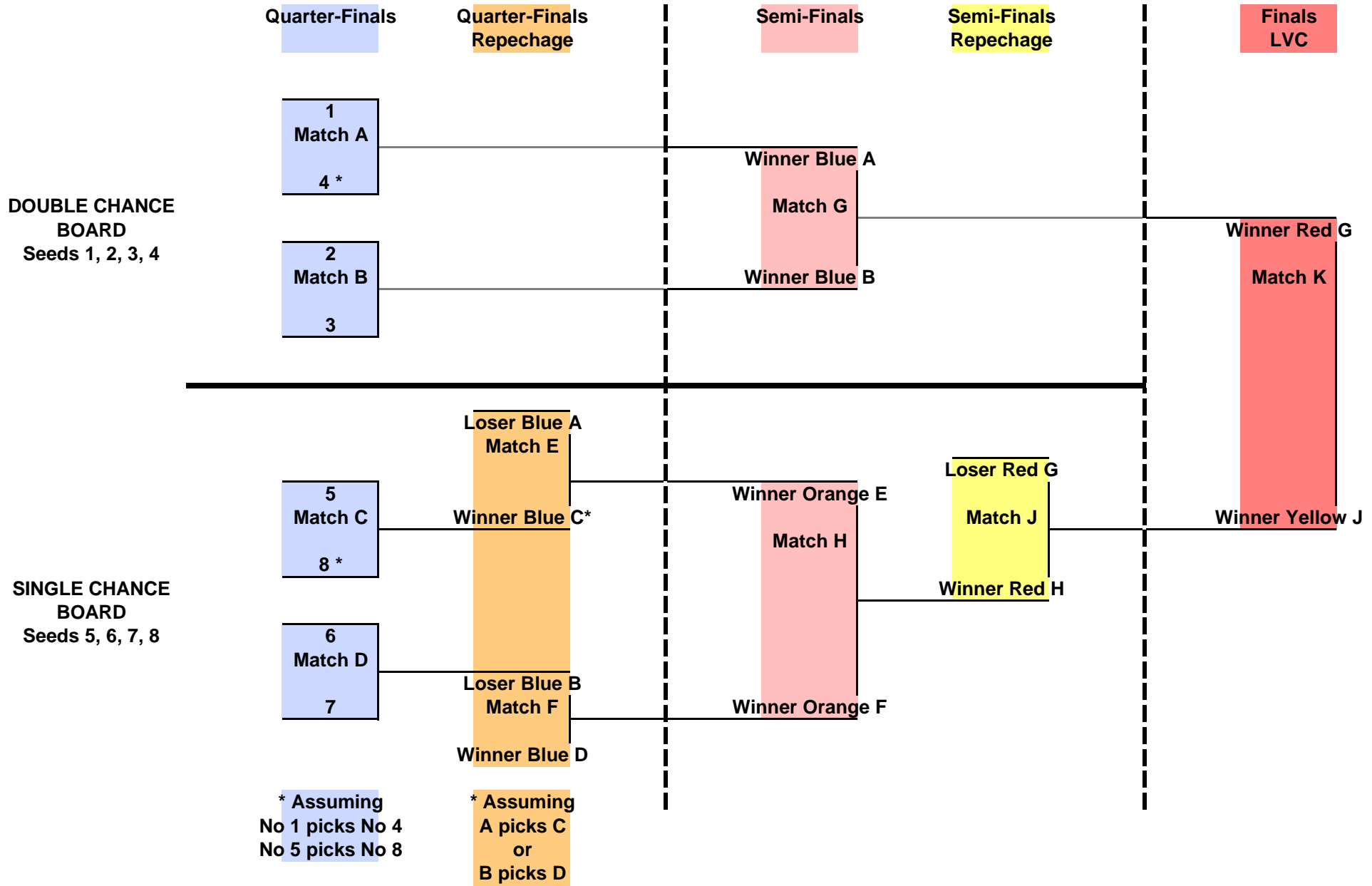
Subsequent Matches

For each of the Quarter-Finals, Quarter-Final Repechage, and Semi-Finals a drawing will be held to determine the order in which each Match will be sailed. For the Semi-Final Repechage and the Finals, no drawing is necessary.

For the Quarter-Finals, Quarter-Final Repechage, Semi-Finals, Semi-Final Repechage, and the Finals, yachts shall be assigned ends of the starting line for their respective matches by a toss of a coin prior to the first race and will alternate for each competed race thereafter.

LVC QUARTER FINAL & SEMI-FINAL FORMAT

Appendix B



Note: The boat losing in Match C, D, E, F, H, J & K is excused from the Regatta.

APPENDIX "C"

This Appendix C forms part of the Sailing Instructions.

Course Positions and Rendezvous Coordinates

Rendezvous Coordinates

Red Course

	Latitude	Longitude
Centre	36° 39.8	174° 48.8
1	36° 38.2	174° 48.8
2	36° 38.7	174° 50.3
3	36° 39.8	174° 50.8
4	36° 40.9	174° 50.3
5	36° 41.4	174° 48.8
6	36° 40.9	174° 47.3
7	36° 39.8	174° 46.8
8	36° 38.7	174° 47.3

Blue Course

	Latitude	Longitude
Centre	36° 41.8	174° 52.6
1	36° 40.1	174° 52.6
2	36° 40.7	174° 54.0
3	36° 41.8	174° 54.6
4	36° 43.0	174° 54.0
5	36° 43.4	174° 52.6
6	36° 42.9	174° 51.2
7	36° 41.8	174° 50.6
8	36° 40.6	174° 51.2

Green Course

	Latitude	Longitude
Centre	36° 38.8	174° 55.7
1	36° 37.2	174° 55.7
2	36° 37.7	174° 57.2
3	36° 38.8	174° 57.7
4	36° 39.9	174° 57.2
5	36° 40.4	174° 55.7
6	36° 39.9	174° 54.2
7	36° 38.8	174° 53.7
8	36° 37.7	174° 54.3